

**XEROX**<sup>®</sup>

Technology | Document Management | Consulting Services

Xerox Nuvera<sup>®</sup> 288  
Digital Perfecting System

Overview

# Xerox Nuvera<sup>®</sup> 288 Digital Perfecting System

**Make a Perfect Impression**



# We're Redefining Perfection...

The Xerox Nuvera® 288 Digital Perfecting System is redefining perfection in production printing today. The fastest high-speed digital duplex monochrome cut-sheet printer in the industry, it delivers imaging quality and end-to-end productivity at levels so high, you might just say it's perfect.

While speed and image quality are often the primary focus when we discuss production printing, this easy-to-use and flexible system's supremacy is built on all of these elements:

- **Incredible Image Quality.** It consistently delivers benchmark, offset-level image quality (4800 x 600 dpi and up to 156 lpi) while offering all the cost and time efficiencies associated with digital printing.
- **Faster RIPs, More RIPs!** An advanced Dual Core Processor plus Parallel Raster Image Processing (RIP) means this system gets jobs in and out of the gate in a hurry, processing them quickly, in the most efficient way possible.
- **Lightning-Quick Machine and Finishing Speed.** Not only does it deliver truly remarkable 288 duplexed images per minute, but the Nuvera 288 Digital Perfecting System also enables finishing equipment to run closer to its machine rated speeds, meaning you can complete jobs faster than ever before.
- **More Uptime, More Often.** An exciting new technological advancement, Pass Through Programming, can keep this system producing even when you're waiting for service.

## ...With Incredible Imaging.

The Nuvera 288 Digital Perfecting System's extraordinary image quality is the result of today's most progressive monochrome technology, coupled with customer-focused engineering. It relies on revolutionary EA fine particle toner to produce page after page of polished impressions that are comparable to, or exceed, offset-level output for all of your applications. Since the industry quantifies great imaging in dots per inch (dpi) and lines per inch (lpi), it's important to know the Nuvera 288 Digital Perfecting System has an impressive set of numbers to support the results you'll see, including:

- RIP at 1200 x 1200 dpi
- 4800 x 600 dpi printing
- Halftone screens available at 85, 106, 125, 134 and an unprecedented 156 lpi

These quality facts translate into phenomenal printed pages through silky grays, pictures that say "this is for real," and heightened clarity and detail in every line and letter.

Total Productivity Continuum						
Setup Time	+	Processing Time	+	Run Time	+	Finishing Time
<ul style="list-style-type: none"> <li>• FreeFlow®               <ul style="list-style-type: none"> <li>– Process Manager</li> <li>– Output Manager</li> <li>– Makeready and Scanner 665</li> <li>– Variable Information Suite</li> <li>– Web Services</li> </ul> </li> </ul>		<ul style="list-style-type: none"> <li>• FreeFlow DocuSP</li> <li>• 2.6 GHz Dual Core Processor               <ul style="list-style-type: none"> <li>– Advanced Parallel RIP</li> <li>– Optional: Second Dual Core</li> </ul> </li> <li>• RIP 1200 x 1200 dpi               <ul style="list-style-type: none"> <li>– 4800 x 600 dpi printing</li> </ul> </li> </ul>		<ul style="list-style-type: none"> <li>• 288 Duplexed Images Per Minute</li> <li>• Toner/Developer (400,000+ Images Combined Yield, Simple Reload While Run)</li> <li>• Sheet-Feed Module Combinations</li> <li>• DocuSheeter NV Roll Feed Solution</li> </ul>		<ul style="list-style-type: none"> <li>• Optimizes Speed Capacity of Finishing Devices</li> <li>• Sheet Flatness=Reliability</li> <li>• Outstanding Stack Quality</li> <li>• Unload While Run</li> </ul>
Uptime						
<ul style="list-style-type: none"> <li>• Pass Through Programming</li> </ul>		<ul style="list-style-type: none"> <li>• Simple Jam Clearance, Easily Accessible</li> </ul>		<ul style="list-style-type: none"> <li>• prInteract<sup>SM</sup> (Remote Service)</li> </ul>		<ul style="list-style-type: none"> <li>• Productivity Plus (Integrated Maintenance Program)</li> </ul>

### ...With Speed, Power and Productivity.

The Nuvera 288 Digital Perfecting System features a unique tandem architecture design that enables it to produce 288 (A4 – 8.5” x 11”) duplexed images per minute (ipm). This innovative design offers a straight paper path to support a wide variety of media and facilitates reliable paper handling. The system’s Sheet Enhancement Module (SEM) ensures unparalleled sheet flatness, which results in outstanding stack quality as well as the highest levels of performance from downstream finishing alternatives. And finishing equipment runs near engine speed, so end-to-end productivity is truly realized.

The Xerox FreeFlow® DocuSP® Controller software’s robust Dual Core Processor is at the heart of the Nuvera 288 Digital Perfecting System’s hard-driving productivity. It enables you to handle even the most complex jobs with ease and finesse, at incredible RIP speeds. And when using the benefits of the parallel RIP feature in DocuSP it will automatically channel each job to be produced in the most efficient way possible.

With all this speed, power and productivity, you’ll also find versatility. The Nuvera 288 Digital Perfecting System accepts many common data streams in their native language, so what you expect is what you get, no data transformation required. It also has broad media latitude so you can choose from an enormous selection of substrates to create exactly the applications you envision.

### ...With Flexibility.

The Nuvera 288 Digital Perfecting System offers a comprehensive array of features to ensure you’ve got what it takes to triumph. This versatile system prepares you to take on the challenging and changing requirements of your business, day in and day out, with the following features:

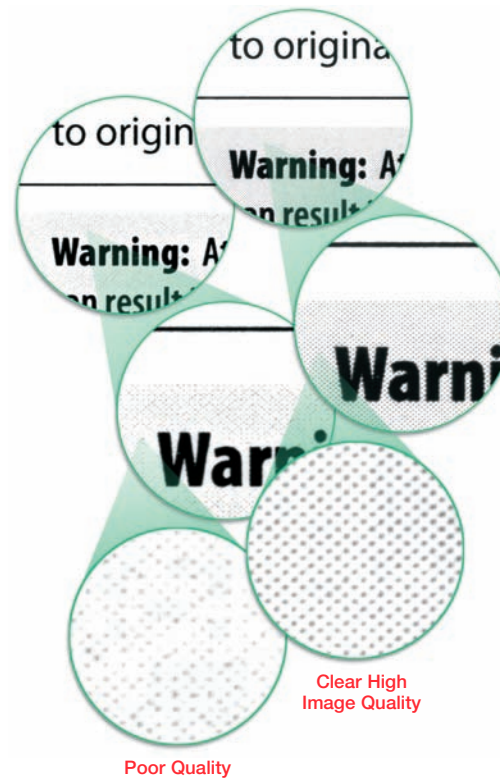
#### Hardware

- **Various Sheet-feed Modules (including Roll Feed Solutions), which can be used independently, together or in combinations to best support your workflow**
- **Sheet Insertion Module options to insert covers and color pages within jobs, post process and in line**
- **Basic Finisher Modules for production in-line stapling and stacking in single or dual combinations for continuous, unload-while-running productivity**
- **Finishing Transport Module, which gives you quick, easy access to an ever-expanding list of third-party finishing alternatives from complete production grade book factories, booklet makers and fusion-punch products to high capacity stackers with removable transport carts and more**

#### Software

Xerox FreeFlow DocuSP offers unmatched processing power supporting flexible job submission, remote workflow and advanced security control, providing optimum productivity.

- **Rich and familiar DocuSP capabilities including the ability to connect from various client environments, from Apple Mac® computers and PCs, plus compatibility with other DocuSP-based products**



- **Extensive connectivity to mainframe applications**
- **Expansive range of data streams supported in their native languages (Adobe PostScript® PCL, PDF, TIFF, ASCII, LCDS and IPDS and variable data formats such as Xerox VIPP® and PPML), no converter or transformer required**
- **Productivity Pack (multiple queues, robust stock library)**
- **Image Quality Pack providing line screens up to 156 lpi**

While the Nuvera 288 Digital Perfecting System is already extremely powerful and robust, we even offer these options for the most demanding environments.

- **Optional: additional second Dual Core Processor**
- **Optional: memory and hard drive to increase the system’s overall performance and ability to store more job data on the DocuSP Controller**

Revolutionary  
EA  
Toner

# Image Quality So Stunning You Have to See It— and Feel It— to Believe It

The Xerox Nuvera 288 Digital Perfecting System offers image quality so stunning, we think it will take you by surprise. But don't take our word for it. We invite you to conduct your own "image challenge." Compare images you've run on your current equipment, or output from competitive equipment, and compare them to output from the Nuvera 288 Digital Perfecting System.

You'll see the difference in the clear, fine lines, razor sharp text, bold solids and clean halftone photos. You'll feel the difference as well, in the distinctive sophistication of every sheet's smooth, offset-like matte finish. You'll know the difference and, most importantly, so will your customers.

## A Fabulous Image: What It Is in Black and White.

It's easy to underestimate the importance, and the beauty, of black-and-white printing. After all, from instruction manuals to books to bills and statements, it's everywhere, so we may take it for granted. There are, however, some telltale signs of a great monochrome image so you'll know it for sure when you see it:

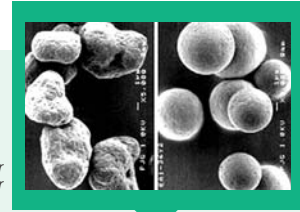
- **Image Rendition.** It should appear clear, accurate and pleasing with a wide range of gray levels.
- **Details.** Even lines, smooth curves and blends, highly detailed rendering of text in even the smallest typefaces.
- **Uniform Blacks.** Excellent contrast is a strong indicator.

Perhaps most notably, when you see contrasting images that combine outstanding complex halftone images in concert with bold uniform solid blacks, you'll know you're looking at exceptional black-and-white printing!

## Innovative EA Toner Makes the Difference.

EA Toner plays a key role in the uncommonly high level of imaging quality the Nuvera 288 Digital Perfecting System achieves. Through this revolutionary process, we have built on the tradition of unrivaled image quality you've come to expect from Xerox Nuvera products. Most importantly, here's what the fine particle EA Toner technology used in the Nuvera 288 Digital Perfecting System does for you:

Regular  
Toner



EA Toner—  
uniform size  
and shape

## What Is EA Toner?

Xerox has essentially reinvented toner production by developing the Emulsion Aggregation (EA) process, the result of which is EA Toner. The process creates one micron to 15 micron particles from smaller nanometer-sized particles, and we've applied it to toner with compelling results. This toner is chemically grown, to very small, consistent particles. It requires no fuser oil and is easier to control, providing consistent results. Relying on a Semi Conductive Magnetic Brush (SCMB) Development System, the brush actually comes in contact with the photoreceptor to create the phenomenal images you'll see produced by the Nuvera 288 Digital Perfecting System again and again.

- **It produces even finer lines with the highest levels of detailing, sharp text, halftones and deep solid blacks.**
- **Printed pages have a smooth, offset-like matte finish—you can feel the difference**
- **Fine scatter particles typically associated with monochrome digital printing become transparent, so even the most difficult line work is razor sharp. Detailed images are crisp and clear.**
- **High yields mean longer production print runs are possible without operator attention or intervention to change toner/developer.**
- **Friendly to the environment, it achieves a better distribution of smaller particles to enable enhanced quality with less toner per page.**

TELER<sup>Registration</sup>

**No Need to Stop and Fill Up.**

Because toner and developer are combined in a single high-volume container, you can easily replenish both without a service call. With an average yield of up to 210,000 prints per container, you won't need to replace them as often. Each print engine holds two (2) containers to facilitate over 400,000 prints to obtain maximum unattended run time. When you do need to replace them, you can do so while the machine is running to maintain production, avoiding downtime.

**A Clean Route to the Best Resolution.**

The Nuvera EA Digital Production System offers the highest monochrome resolution of any digital production printing system on the market today. You get the best image quality and performance, with 1200 dpi default resolution and powerful processing from the FreeFlow DocuSP Controller. Plus, Xerox's unique Cyclone Cleaning Technology automatically removes stray toner, paper dust and particles. This creates a pristine environment for consistently sharp text, images and photos.

**Outstanding Registration Keeps Paper on the Right Path.**

The Nuvera 288 Digital Perfecting System's noteworthy registration is enabled by Translating Electronic Registration (TELER). TELER registration precisely controls the position of each sheet of paper according to the image on the photoreceptor and the speed of each sheet traveling through the paper path to assure that it is in exactly the right position to receive the latent image. The result is superior image-to-sheet ( $\pm 0.65$  mm) and front-to-back ( $\pm 0.65$  mm) registration which meets or exceeds general publishing standards.

**Superb Line Screening Yields Elegant Halftones.**

This system's unprecedented line screening—available at up to 156 lpi—produces smooth grays, more realistic pictures, increased sharpness and detail for a look that rivals offset quality. Screens of 85, 106, 125 and 134 lpi are also available.

**Media to Make Your Image Shine.**

The Nuvera 288 Digital Perfecting System lets you choose from an expansive range of substrates to match your application requirements—and build your application capabilities—even oversized coated papers. You can expect consistently amazing image quality on popular coated and uncoated stocks, including bond, bristol, cover, index, offset, recycled, transparencies, carbonless, labels, tabs and preprinted forms (sizes from 8" x 10" to 12.6" x 18.5"/203 mm x 254 mm to 320 mm x 470 mm).

**Impeccable Sheet Flatness in Every Environment.**

Heat, humidity and curl represent a host of challenges in every production print environment. They can directly impact the performance of equipment and the quality of output.

Xerox's new slim, automated Sheet Enhancement Module (SEM) takes these challenges head-on to deliver unparalleled sheet flatness. It improves stack quality and clears the way to achieve the highest levels of performance from downstream finishing alternatives. In fact, in situations where external seasonal factors such as heat and humidity give rise to abnormal conditions, it allows operators to fine-tune automated controls or access a "manual override" function to overcompensate in fighting these environmental elements to effect optimal sheet flatness. With the SEM, you can maximize the Nuvera 288 Digital Perfecting System's stellar image quality and achieve optimally smooth print runs, fueled by impeccably flat sheets. And best of all, it works in conjunction with the stock library to automatically adjust to the specific characteristics of the paper you are running. Sheet to sheet, and job to job.



# The Power of 2 with the Simplicity of 1

The Xerox Nuvera 288 Digital Perfecting System offers several unique features that come together to create a system that is truly in a class by itself. While it effectively does the work of two systems, its small footprint means it occupies only the space you would normally allow for one system. The Nuvera 288 Digital Perfecting System simply provides you more of everything—engines, quality, speed, uptime, performance, overall productivity and, of course, opportunities for you to build your business.

## Tandem Architecture Produces Results Twice as Fast.

The Nuvera 288 Digital Perfecting System is able to produce 288 duplexed ipm because of its uncommon tandem architecture design. Although this comprises two print engines working closely together, the engines actually function differently together than they would if they were used independently.

- **When printing in the duplex mode,** both engines are used at full speed (144 A4, 8.5" x 11" **pages** per minute). Each prints one side of a two-sided document, creating a straight path that results in a remarkable net speed of 288 duplexed **impressions** per minute.
- **When printing in the simplex mode,** the system runs at 144 pages or impressions per minute.

Optimum performance is ensured by a closed loop process which continuously scans printing activities to monitor and maintain both print quality and registration. Advanced image balancing software assures the operator has full access to consistent image quality between the

tandem engines. Additionally, the Nuvera 288 Digital Perfecting System’s entire paper path, including both the print engines and all accessory components, is designed to provide operators full and complete access, at any time, for simple jam clearance.

Xerox SmartPress™ PLUS Paper Handling works in conjunction with FreeFlow DocuSP’s onboard stock library and the Nuvera 288 Digital Perfecting System’s straight duplex paper path to accommodate a greater variety of media. It is in constant communication with paper handling vacuums and rollers, much like a fuel engine where the pistons work together to provide maximum power and, of course, full job recovery.

## Do More, More Often with Pass Through Programming.

No one likes to tell a customer, “Sorry, I can’t.” With the Nuvera 288 Digital Perfecting System, you won’t have to. Xerox’s groundbreaking Pass Through Programming technology converts downtime—which used to be lost time—into bonus uptime. Pass Through Programming lets you put that time to good use, taking advantage of business opportunities and jobs you might not have been able to accommodate in the past.

In a variety of situations, jobs can continue printing at 144 ipm until Xerox service arrives. When either of the two print engines requires a soft shutdown, operators can select the “Pass Through Mode.” All sheets are then imaged by the assigned primary print engine and simply pass through the idle print engine. It’s one more way the Nuvera 288 Digital Perfecting System maximizes uptime, productivity and profitability for you.

The Productivity Advantage	
Normal Production (no service required)	Pending Service (% of productivity pending service)
Traditional Production Devices 100%	0%
Xerox Digital Duplex Production System Technology (Pass Through Programming) 100% – 288 ipm	50% – 144 ipm Simplex or Duplex

**Dual Core Processor Drives End-to-End Productivity.**

The Xerox FreeFlow DocuSP front end offers a robust Dual Core Processor to further boost the Nuvera 288 Digital Perfecting System’s productivity. It provides the “muscle”—incredible RIP speed—to easily handle even the most complex jobs, e.g., typically those associated with variable data and high resolution images. This Dual Core Processor is more than sufficient to meet the needs of most customers. We do, however, offer an optional second Dual Core Processor to accommodate uniquely aggressive environments where the application set is consistently dominated by extremely complex jobs containing extraordinarily large amounts of high end graphics and variable images.

**Parallel RIP: Your Most Challenging Jobs Are Our Specialty.**

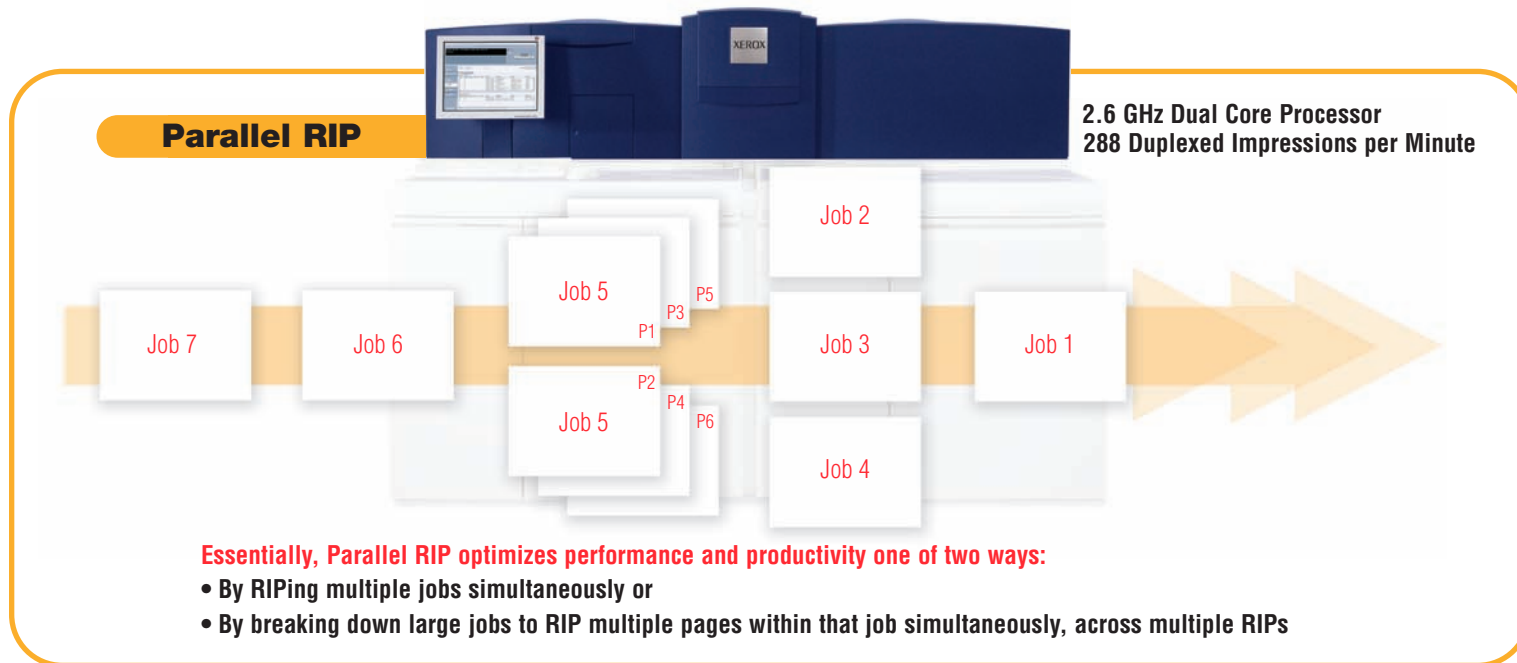
Parallel RIP further distinguishes the Nuvera 288 Digital Perfecting System’s performance. This exciting feature consists of a set of Xerox proprietary software which leverages multiple processors, memory and software controls to boost image processing performance and print speed beyond traditional boundaries. It’s specialty? Your most challenging jobs. It is ideal for long jobs with many non-repeating scanned images or digital photographs; these include, for example, text books, magazines, yearbooks and product manuals. It is also best for complex jobs with low run lengths, proofing and test prints.

**How Does Parallel RIP Work?**

When selected DocuSP will intuitively manage the jobs you have submitted for Parallel RIP. A job can then be split into sections that will

be processed in parallel (simultaneously) using all of your available RIPs to complete it as quickly as possible. Or DocuSP may determine to have the job processed on a single RIP, which will likely leave one or more of your remaining RIPs open for the next job or jobs.

While the maximum number of RIPs you can have will vary depending on the processor and memory configuration of your Nuvera 288 Digital Perfecting System, as a rule, approximately two to three RIPs will run on one Dual Core Processor. If you choose to add an optional second Dual Core Processor, you can potentially have up to five RIPs working together. *(LCDS, IPDS and PCL data streams are not further enhanced via Parallel RIP.)*



**Essentially, Parallel RIP optimizes performance and productivity one of two ways:**

- By RIPing multiple jobs simultaneously or
- By breaking down large jobs to RIP multiple pages within that job simultaneously, across multiple RIPs

# Perfect for **Your** Business

## 1 Paper Handling

The Xerox Nuvera 288 Digital Perfecting System offers you unsurpassed paper handling. Its paper trays rely on air shuttle feed technology. Processor-controlled using information from the stock library, this technology ensures reliable feeding and supports both heavier media and coated paper. Air knives in the trays separate paper to avoid misfeeds.

The system's remarkable innate intelligence tells rollers when to press harder, when the air knives should add thrust and more to deliver a highly intuitive, highly productive paper-handling process sheet to sheet. Additionally, it offers ultra-reliable paper handling for duplex production printing via a straight duplex paper path that is easily accessible to your operator.

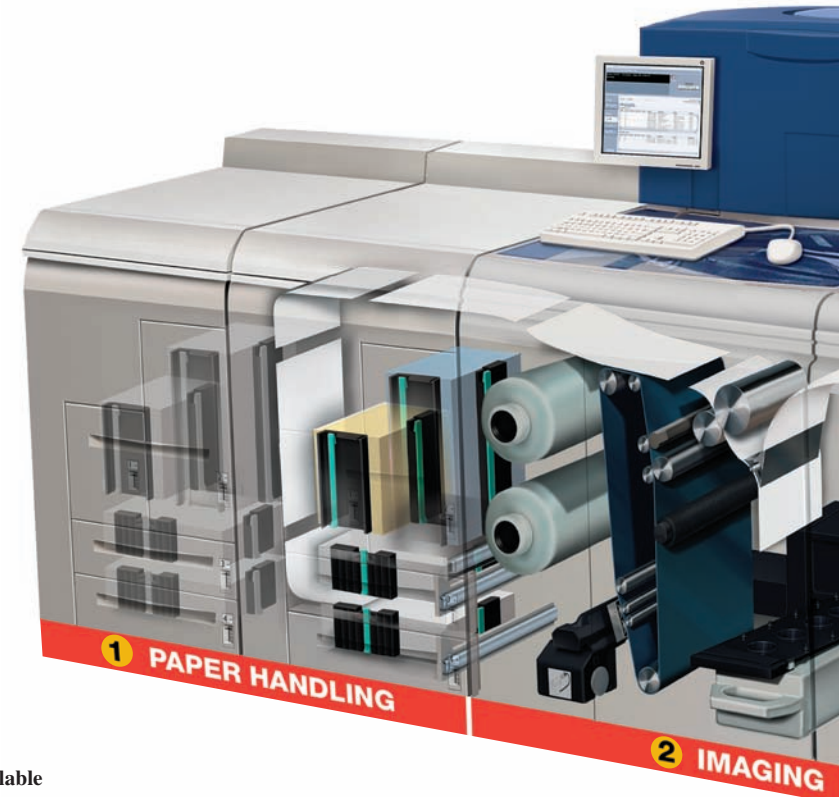
Your feeding options include:

- **Standard Sheet-feed Module.** This four-tray Sheet-feed Module has a 5,800-sheet capacity. It enables you to do more high-value applications with more unattended runtime, right at your point of need, and to produce high-impact jobs on demand.
- **High Capacity Sheet-feed Module.** The High Capacity Sheet-feed Module has a 3,200-sheet capacity and runs applications with two oversize trays. It is an alternative for environments that want to leverage oversize stocks.

*Note: You can add up to two of the above modules in any combination to your configuration, enabling up to an 11,600 sheet capacity with up to eight pick points to support long print runs and complex, multistock production runs.*

- **Roll Feed Solution.** A roll feed solution is available using a DocuSheeter NV communication interface kit with the standard four-tray Sheet-feed Module. This solution can provide cost savings and also add up to five hours of continuous feeding in a production print environment while still providing access to the multiple pick points of the paper trays.

Especially important is that the Nuvera 288 Digital Perfecting System allows you to reload paper without job interruption, significantly increasing continuous productivity. A roll feed solution can also be added provided a four-tray module is part of the configuration (see your Xerox representative for local availability). This will be especially useful to you if you are a book or statement printer, running high volumes with predominantly one stock, or many shorter run jobs using the same stock.

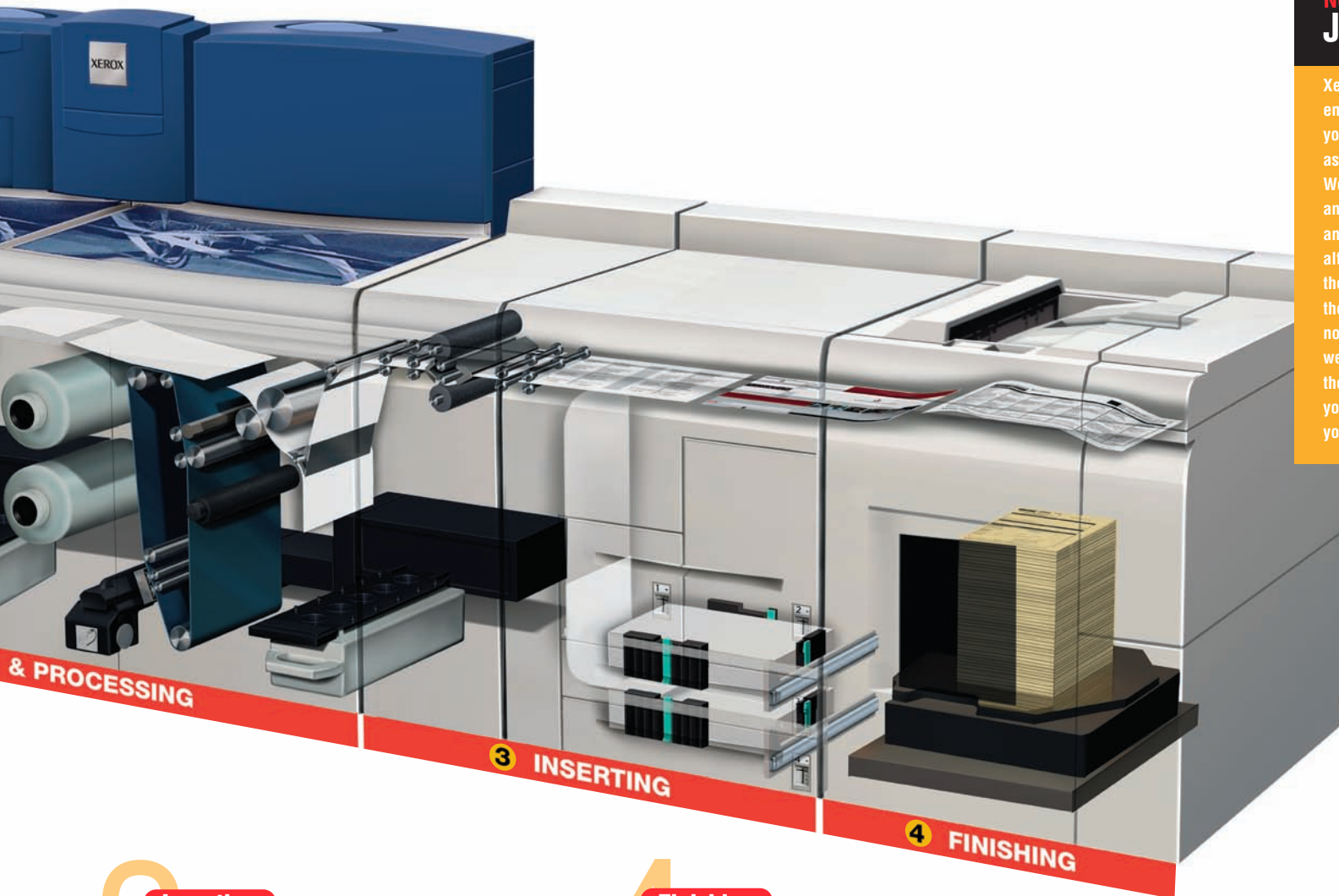


## 2 Imaging and Processing

The powerful Xerox FreeFlow DocuSP Controller software is integrated right into the Nuvera 288 Digital Perfecting System, so it doesn't cost you any valuable space with a separate workstation. It includes a powerful Dual Core Processor, and you may choose to add an optional second Dual Core Processor if you wish. You'll also enjoy benefits such as multiple queues and a robust 250 stock library, Xerox FreeFlow VI Suite, additional data stream licenses, imposition software and enhanced line screen capability (available in 85, 106, 125, 134 and 156 lpi).

## Need Something Else? Just Ask.

Xerox is here to provide solutions that enable you to produce the applications your business demands today as well as those you dream of for the future. We are constantly researching new and better ways to help you succeed, and have created several customized alternatives for customers. Though they were created to meet the needs of these particular customers, they are now available to other customers as well. So if you need something beyond the standard and optional capabilities you see in this brochure, please talk to your Xerox representative.



# 3

## Inserting

• **Post-print Paper Insertion Modules (available in two- or four-tray).** The post-print four-tray Paper Insertion Module has a 5,800-sheet capacity while the two-tray Paper Insertion Module accommodates 3,200 oversized sheets. They feed preprinted and specialty stocks, providing up to 12 pick points for the total system. The Nuvera 288 Digital Perfecting System excels at producing unique workflow jobs that require the post-printing insertion of color covers, inserts or specialty media. The inserting can be integrated so you simply load the preprinted stock and run your job.

# 4

## Finishing

The Nuvera 288 Digital Perfecting System offers you many key advantages when it comes to finishing. You have a wide variety of in-line finishing options from which to choose, both from Xerox as well as an array of industry-leading third-party suppliers. Available to accommodate all of your needs, from complex documents to challenging environments, these include:

- **Basic Finisher Module and Basic Finisher Module Plus,** which are intended for production print environments and provide in-line stapling and stacking in single or dual combinations offering unload while run capability
- **Finishing Transport Module,** which gives you quick and easy access to a variety of third-party finishing and stacking devices.

# A Perfect Set of Features

The Xerox Nuvera 288 Digital Perfecting System comes equipped with a broad range of features to ensure you are able to accomplish what you want to accomplish: meeting your customers' requirements with high-quality output that more than delights them, attracting new customers, while maintaining, expanding and building your business in new, imaginative and profitable ways.

PROMOTIONAL/  
TRANSACTIONAL



MANUAL and BOOK PUBLISHING



**2** Imaging & Processing



Xerox Nuvera 288 Digital Perfecting System



**1** Feeding



Roll Feeder with DocuSheeter NV<sup>1</sup>



Standard Sheet-Feed Module



Expanded Sheet-Feed Module (special order)



High Capacity Sheet-Feed Module



High Capacity Sheet-Feed Module

**3** Inserting



Standard Sheet-Feed Insertion Module



High Capacity Sheet-Feed Insertion Module

**4** Finishing



Basic Finisher Module Plus<sup>2</sup>



Basic Finisher Module<sup>2</sup>



Finishing Transport Module

- Booklet Makers
- Staplers
- Perfect Binders
- Punchers
- Stackers
- Thermal Binders
- Spiral Binding

<sup>1</sup>Roll feeder solution requires configuration with Standard Sheet-Feed Module or Expanded Sheet-Feed Modules only.

<sup>2</sup>Available "Dual" finishing combinations (not shown) Standalone (1) Basic Finisher Module Plus and (1) Basic Finisher Module, or in combination with other in-line finishing solutions (2) Basic Finisher Modules Plus and (1) Finishing Transport Module. (2) Basic Finisher Modules Plus and (1) Finishing Transport Module available post launch.

# The Formula for Perfect Productivity

The Xerox Nuvera 288 Digital Perfecting System does productivity better than anybody. That's because we cover it from every angle, including processing, run and finishing speeds, plus reliability and uptime, to offer you perfect productivity. You can boost that productivity even further by integrating a Xerox FreeFlow workflow that will break through every boundary to productivity you encounter. We've left nothing to chance, and we dare our competitors to say the same—and prove it.

Productivity

12



## Total Productivity. Making Work Better, Faster, Easier.

Workflow is the process of managing jobs from creation through final output. We know you want a workflow that takes you through each step as quickly and efficiently as possible, while still maintaining the highest levels of quality. That's where the Xerox FreeFlow Digital Workflow Collection comes in. Fully supporting the Nuvera 288 Digital Perfecting System, the Xerox FreeFlow suite of optional solutions enables you to enhance, automate and simplify your existing workflow, increasing productivity and making the most of your investment.

So whether you want to offer your customers the ability to order print online (FreeFlow Web Services, powered by Press-sense), reduce the cost and time required to prepare jobs for print (FreeFlow Process Manager™), balance printer activity to optimize efficiency (FreeFlow Output Manager™), find a distributed solution for creating complex jobs and preparing to print (FreeFlow Makeready® and Scanner 665), or take advantage of the personalization business opportunity (FreeFlow Variable Information Suite) and so much more, FreeFlow has a workflow option for you.

For more information, visit

[www.xerox.com/freeflow](http://www.xerox.com/freeflow)



▲ Output Manager

◀ Process Manager

Makeready ▶

### Free to Be in Control.

Xerox FreeFlow DocuSP, the print server for the Nuvera 288 Digital Perfecting System, delivers unparalleled flexibility and powerful processing capabilities. It gives you a remarkable level of job control, along with a remarkable level of freedom, to do what you need to do to be competitive and profitable in today's challenging marketplace. And it provides you with one Dual Core Processor—and the option to add another—to drive the kind of perfect end-to-end productivity your business demands.

You'll have control over data streams, prepress functions, job queues, output quality and more—plus the freedom to work within a number of network environments to produce a broad range of business-building applications, all while using a variety of equipment.

Advantages of FreeFlow DocuSP include the ability to:

- **Receive/RIP/print jobs concurrently to efficiently produce hundreds of small jobs or transactional data jobs with thousands of customer database entries.**
- **Print and re-print on demand with simple controls to preview, edit, impose, proof, interrupt, reprogram and forward jobs.**

- **Advanced security controls allow individual or group setting.**
- **Submit jobs from just about anywhere, including desktop/commercial publishing workflows. Submit data from mainframe systems and client/server architectures, and submit XML/database/ASCII input or simply from DVDs, CDs and even portable USB devices.**
- **Submit print-ready jobs into pre-set Hot Folders for easy, automatic printing.**
- **Automate job ticketing and customize job workflows through up to 250 programmable queues with minimal operator intervention.**
- **Use stock library to promote efficient use of media.**
- **Save on training costs and increase uptime—familiar interface and workflow lends itself to “train once” paradigm.**

And while FreeFlow DocuSP enables both the high imaging quality and speeds required for publishing environments, it also readily accommodates the multiple data streams required for transactional applications. FreeFlow DocuSP simultaneously handles an impressive variety of common data streams including Adobe PostScript, PCL, PDF, TIFF, ASCII, LCDS and IPDS and variable data format such as Xerox VIPP and PPML.

### Staying Productive.

Xerox offers these options to ensure you enjoy maximum uptime from your Nuvera 288 Digital Perfecting System.

#### Xerox Productivity Plus

The Xerox Productivity Plus Integrated Maintenance Program gives your operators the power to perform routine preventive maintenance and tune-ups in your production print environment. It puts you in control so you can maximize your up-and-running time.

#### Xerox prInteract<sup>SM</sup> Remote Service Offerings

Xerox  
prInteract  
Remote Service Offerings

Remote service is available through a secure, online connection between Xerox engineering staff and your Nuvera 288 Digital Perfecting System. Using this connection, we can quickly respond to your service needs, enabling us to:

- **Easily access equipment data to provide real-time recommendations and help optimize overall performance.**
- **Automatically generate up-to-the-day accurate meter reads with MeterAssistant™.**

Competitive and  
**PROFITABLE**

# A Perfect Finish

The Xerox Nuvera 288 Digital Perfecting System supports an array of in-line and off-line professional finishing options, both from Xerox and from respected third-party suppliers. Equally important is the system's ability to push finishing equipment closer to its optimized engine speed. This means you can now take advantage of the higher speed capabilities of many finishing devices, with no slow-down in your jobs.

We offer many finishing options to accommodate and complement every aspect of your jobs, from complex documents to unusual customer requirements to challenging environments. With the Nuvera 288 Digital Perfecting System's offset-like quality and superb sheet flatness, you can be sure to put the right finishing touch on your projects.

## The Basics.

The Basic Finisher Module and Basic Finisher Module Plus allow you to staple and stack up to 3,000 sheets with single or dual staple positions. Additionally, the Basic Finisher Module Plus gives you the go-ahead to expand your in-line capabilities. Designed for production print environments, these vigorous module adds capacity, consistency and productivity for the long run.

### The Basic Finisher Module Plus

- Features a convenient side exit that lets you integrate basic in-line stapling and stacking with other finishing equipment.
- Works in harmony with the Basic Finisher Module to enable standalone dual finishers that stack up to 6,000 sheets. Delivers unload-while-run finishing capability, ensuring greater throughput without interruption.

- Can be used in tandem, as described, enabling you to integrate two Basic Finisher Modules Plus for even greater capacity with other in-line finishing alternatives.

Both the Basic Finisher Module and Basic Finisher Module Plus provide increased capability to handle the Nuvera 288 Digital Perfecting System's expanded paper weights and boost your productivity.

### Your Link to More Finishing Options.

The Nuvera 288 Digital Perfecting System's Finishing Transport Module is your link to more finishing choices, giving you easy access to an expansive, growing range of third-party finishing and stacking devices from recognized industry leaders such as C.P. Bourg, Plockmatic, GBC and others. Document Finishing Architecture (DFA) enables you to add just about any finishing option you need, whether you are working in a publishing or transactional printing environment.

OFFSET  
QUALITY



**Finishing Transport Module**



**Basic Finisher Module Plus and  
Basic Finisher Module**



**Xerox DS500  
High Capacity Stacker**



**Xerox DB120-D Document Binder**



**C.P. Bourg Manual and Book Factory with Challenge Machinery CMT 330 3 Knife Trim**



**GBC Fusion Punch II with Offset Stacker**



**C.P. Bourg BDFx Booklet Maker with Square Edge**



**Xerox SquareFold® Booklet Maker**

**Endless application opportunities for you and your customers, including promotional transactional, book publishing, technical manuals and more.**

# XEROX®

Technology | Document Management | Consulting Services

For more information on Xerox Nuvera® 288 Digital Perfecting System, call toll-free **1-800-ASK-XEROX** or visit us on the web at [www.xerox.com](http://www.xerox.com)

## Leaving You with a Perfect Impression

The Xerox Nuvera 288 Digital Perfecting System offers the perfect combination of features to ensure the consistently high-quality output and high productivity you need to outpace the competition. You'll benefit from:

- **All-out speed, 288 duplex images per minute**
- **Image quality that will "Wow" you and your customers**
- **Faster RIPs, More Rips! — Dual Core Processor, Parallel RIP**
- **Outstanding Sheet Flatness/Stack Quality**
- **Maximum uptime, all the time — Pass Through Programming**

We know you're ready to be at the pinnacle of productivity with today's fastest high-speed digital duplex monochrome cut-sheet printer. Talk to your Xerox representative to find out just how perfect it can be!

